



IFTD G SERIES

User Guide

FLAGSHIP MODEL 75" 98"

Please read this guide carefully before operating your set and retain it for future reference.



CAUTION!

- Changes or modifications not expressly approved by the party responsible for compliance could void the user's authority to operate the equipment.
- This User Guide includes detailed usage instructions for your product. Please read this Guide thoroughly.
- Figures and illustrations in this User Guide are provided for reference only and may differ from actual equipment appearance. Equipment design and specifications may be changed without notice.

Getting Started

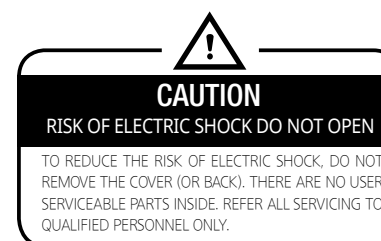


■ Contents

Safety Information	3
Unique Features, Accessories	6
Components	8
Installation Guide	9
Connections	10
Remote Controller	11
Power On/Off	12
Android Screen	13
Touch On Screen Display (OSD)	14
IFTD Settings in Android	15
External Devices and Touch Functions	16
Network, Update & Language Settings	17
Specifications	18

Important Safety Instructions

The illustrations may differ slightly from the items shipped with your product.



The slots and openings in the product are provided for necessary ventilation. To ensure reliable operation of this product, and to protect it from overheating, these slots and openings must never be blocked or covered.

Do not cover the slots and openings with a cloth or other materials.

Do not block the slots and openings by placing this product on a bed, sofa, rug or other similar surface.

Do not place this product in a confined space, such as a bookcase, or built-in cabinet, unless proper ventilation is provided.

Do not place this product near or over a radiator or heat resistor, or where it is exposed to direct sunlight.

Do not place heat generating items such as candles, ashtrays, incense, flammable gas or explosive materials near this product.

Do not place a water containing vessel on this product, as this can result in a risk of fire or electric shock.

Getting Started

Do not expose this product to rain or place it near water or in a wet environment (near a bathtub, washbowl, kitchen sink, or laundry tub, in a wet basement, or near a swimming pool etc.). If this product accidentally gets wet, unplug it and contact an authorized dealer immediately.

This product uses batteries. In your community there might be regulations that require you to dispose of these batteries properly under environmental legislations. Please contact your local authorities for disposal or recycling information.

Do not exceed the standard capacity of a multi-plug or power outlet extension when using it for this product. There is a danger of an electric shock or a fire hazard.

To protect this apparatus from a lightning storm, or when it is left unattended and unused for long periods of time, unplug it from the electric outlet. This will prevent damage to the set due to lightning and/or power line surges.

Use your common sense when operating this product. Never insert anything metallic into the open parts of this product. Doing so may result in an electric shock and/or serious injury.

To avoid electric shock, never touch the inside of this product. Only a qualified technician should open this product. If there is a fault with this product do not attempt to fix it yourself; unless you are a qualified technician.

Do not touch the power cord with wet hands. There is a danger of an electric shock.

Plug the power cord firmly into the power outlet. Failure to do so may cause a fire hazard.

Do not unplug the power cord by pulling the cable only. If the cord is damaged, it may cause an electric shock.

If this product does not operate normally - in particular, if there are any unusual sounds or smells coming from it - unplug it immediately and contact an authorized dealer or service center.

Be sure to pull the power plug out of the outlet if the product is to remain unused or if you are to leave the product for an extended period of time. Accumulated dust can cause an electric shock, an electric leakage or a fire by causing the power cord to generate sparks and heat or the insulation to deteriorate.

Getting Started

Be sure to contact an authorized service center, when installing your product in a location with heavy dust, high or low temperatures, high humidity, chemical substances and where it operates continuously for 24 hours such as an airport, a train station etc. Failure to do so may cause serious damage to your product.

Do not allow children to hang off the product or climb onto it. If it is mounted on a stand or onto a wall the extra weight may cause the product to tip or fall.

Store the accessories (battery, bolts, screws etc.) in a location safely out of the reach of children.

Do not install the product in an unstable location such as on a weak wall, a slanted floor or a location exposed to vibrations. If this product is to be mounted onto a wall, first check that the wall can hold the weight of the product safely.

Do not drop or impart any shock to the product. If the product is damaged, disconnect the power cord and contact a service center immediately.

As a precautionary measure please make sure that you pull out the power cord from the outlet before cleaning the product.

Please take a common sense approach to installing and operating this product.

Getting Started

Unique Features

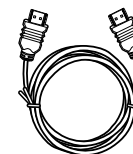
- 1) UHD LED Display
- 2) HDMI 2.0 / Display Port
- 3) Touch Sensor : IR Multi-Touch
- 4) Full Touch OSD
- 5) BLU (Back Light Unit) Control
- 6) HOME Button
- 7) Dual OS Support : Windows (Via EZ OPS) and Android (Built-In)

Getting Started

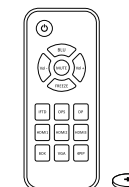
Accessories



AC Power Cable



HDMI Cable



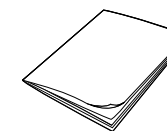
Remote Controller



Touch Sensor USB Cable



Stylus Pen



Quick Manual

Getting Started

Introduction

Symbols used in this manual

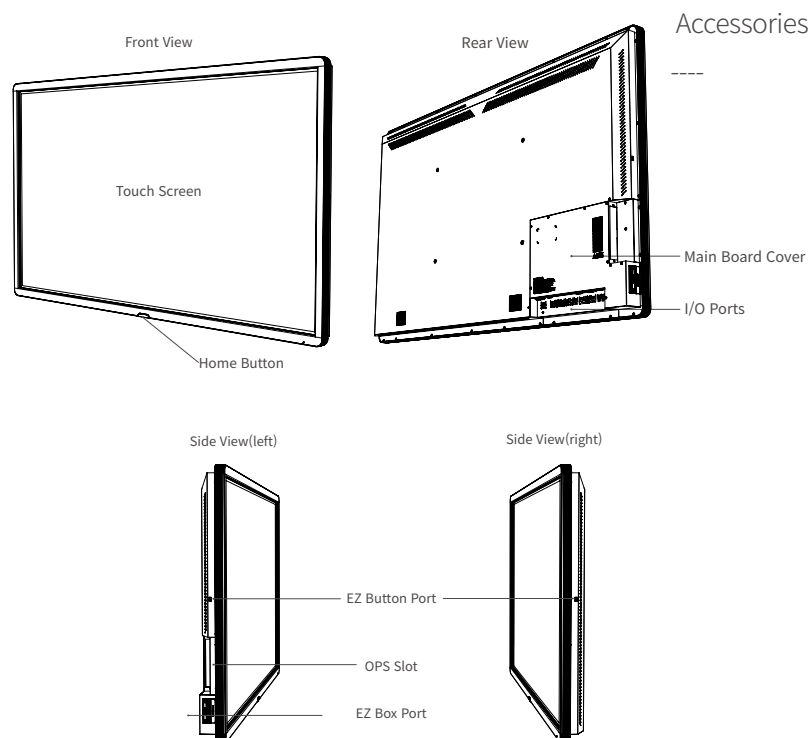
**Note**

Indicates special notes and operating features.

**Caution**

Indicates cautions for preventing possible damage from abuse or mistreatment of the product.

Components

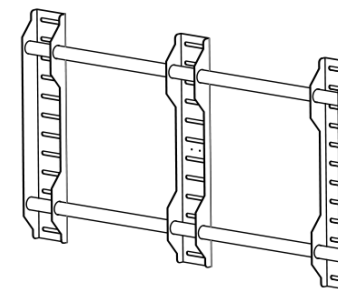


Getting Started

Installation Guide

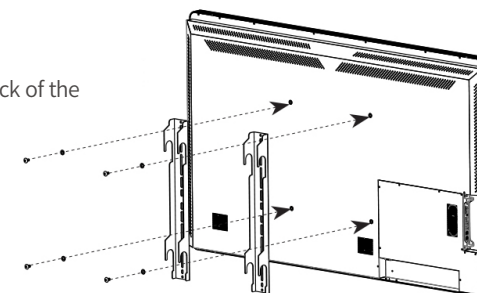
Step1

Install the wall mount brackets on to the wall.



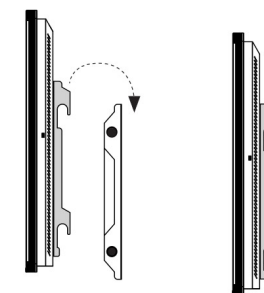
Step2

Install the wing brackets on the back of the product. (Use 4 x M8 screws)



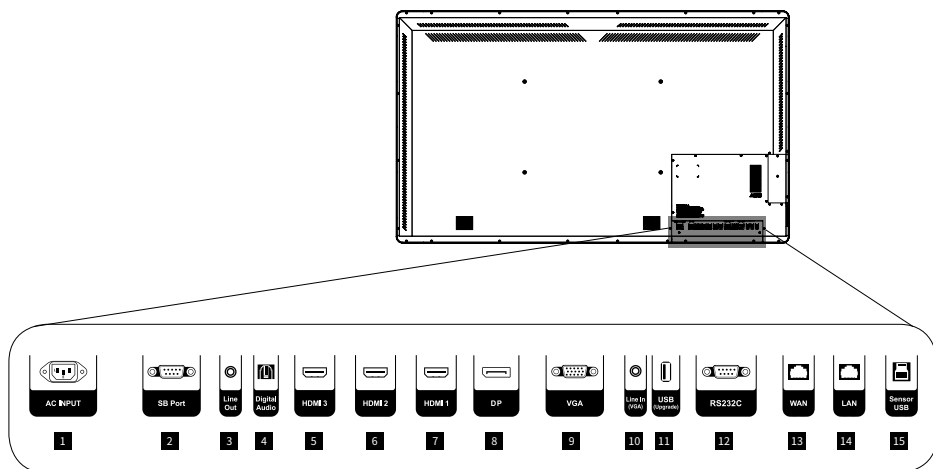
Step3

Install the product as shown in the diagram.



Getting Started

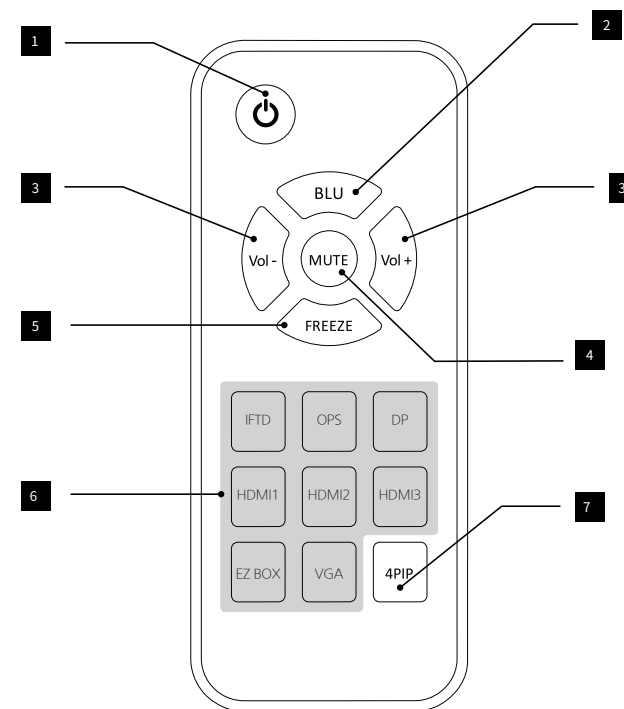
Connections



1. AC INPUT	Connect the power cable to this AC input.
2. SB Port	Connect the EZ SoundBar (Option)
3. Line Out	Connect an external audio amplifier to this port.
4. Digital Audio Output	Connect an audio component via optical digital audio.
5. HDMI3	Connect a HDMI device to this port.
6. HDMI2	Connect a HDMI device to this port.
7. HDMI1	Connect a HDMI device to this port.
8. DP	Connect a DP device to this port..
9. VGA	Connect a VGA device to this port.
10. Line In(VGA)	Connect a VGA audio input to this port.
11. USB (Upgrade)	Used only for upgrades.
12. RS232C	Connect an RS232C control device here.
13. WAN	Connect an ethernet cable for Wide Area Network (Internet) use.
14. LAN	Connect an ethernet cable for Local Area Network use.
15. Sensor USB	Connect to an external PC to enable touch functionality.

Getting Started

Remote Controller

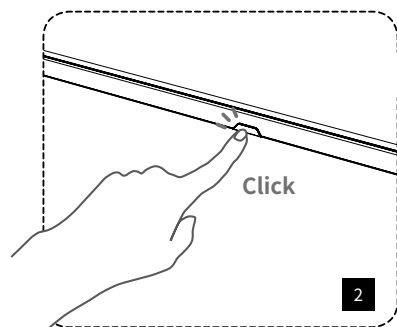
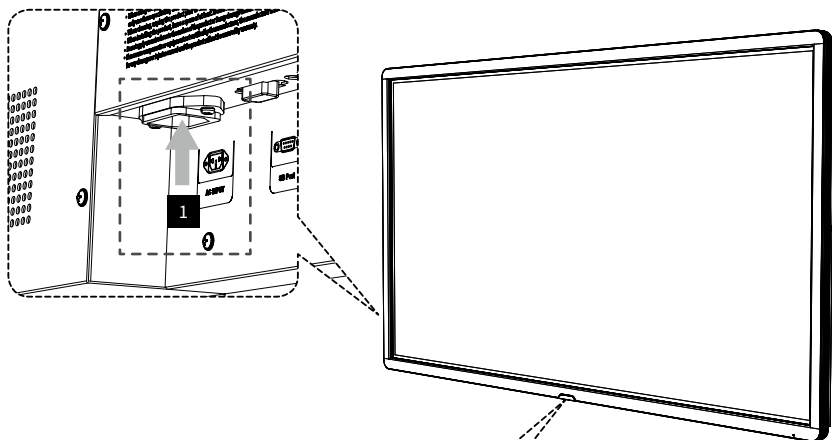


1. Power	Turn the IFTD ON/OFF
2. BLU (Back Light Unit) Control	Turn the Back Light Unit ON/OFF
3. Volume Control	Adjust the Volume
4. Mute	Mute ON/OFF
5. Freeze	Screen Freeze ON/OFF
6. IFTD, OPS, DP, HDMI1, HDMI2, HDMI3, EZ BOX, VGA	Change Input Sources
7. 4PIP	Live 4PIP

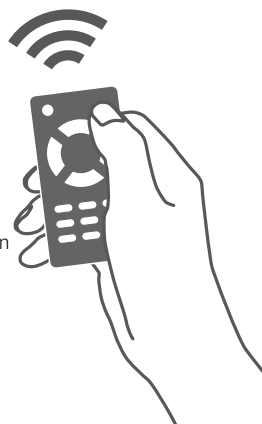
Operation

Power On/Off

1. Connect the AC power cable to the AC power inlet.



2. Press the Home Button or press the power button on the remote control to turn ON the IFTD.



Operation

Android Screen

After turning on the display the Android screen will appear.



1. After turning on the display, press the Home Button to open the Touch OSD menu.
2. Press the Home Button for 3 seconds to turn off the system.

[Power Off] - Use this function to turn OFF the IFTD.

[Settings] - Access the IFTD's Android Settings by selecting this function.

[OPS (Windows)] - If an OPS is installed, you can use this function to switch from Android to Windows.

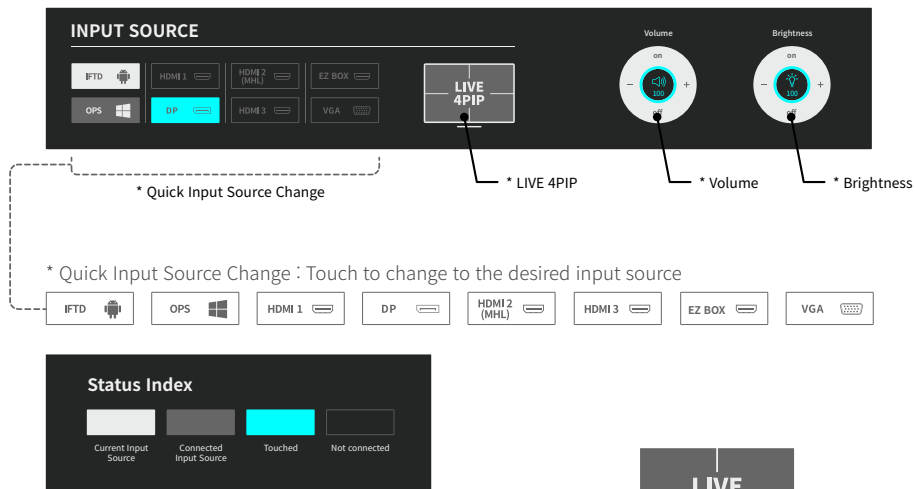
[WiFi Display] - Use this WiFi Display function in conjunction with a compatible WiFi USB dongle.

[Screenshot] - Use this function to capture the content on-screen.

[Apps] - Select this to view all installed applications on your IFTD.

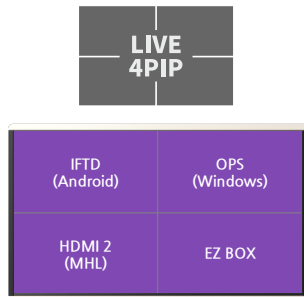
Operation

Touch On Screen Display (OSD)



LIVE 4 PIP

LIVE 4 PIP shows 4 input sources in one screen at the same time. Touch one of the input source screens to change to that input source. Press the Home Button to finish 4 PIP and return to the previous screen.

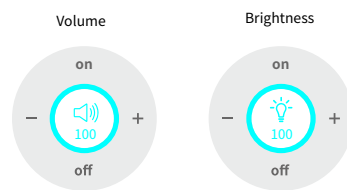


Volume / Brightness

: Volume Control (0~100)

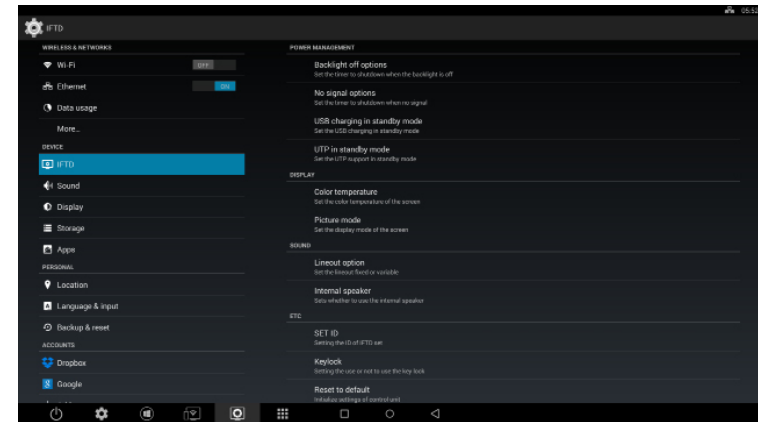
: Brightness Control (0~100)

TIP : While the back light unit is off, touch the screen or press the Home button to turn the back light back on again.



Operation

IFTD Settings in Android



You can access the IFTD settings in Android by selecting the 'Settings' option in the Menu & Navigation bar. Then go to the 'Device' sub-menu and select 'IFTD'.

Power Management Settings

- **Backlight Off Options:** Here you can set the timer to shutdown when the backlight is OFF.
- **No Signal Options:** Here you can set the timer to shutdown when there is no signal.
- **USB Charging Options (In Standby Mode):** Here you can decide whether or not to allow the charging of USB devices in standby mode.
- **UTP in Standby Mode Options:** Here you can set UTP support in standby mode.

Display Settings

In Display options you can customize the picture mode and color composition of the screen.

- **Color Temperature:** This option allows you to set the color temperature of the screen. There are three preset modes to choose from: Standard, Warm and Cool.
- **Picture Mode:** This option allows you to set the display mode of the screen. There are five preset options to choose from: Standard, Game, Movie, Photo and Vivid.

Operation

Sound Settings

In Sound options you can customize the audio settings of the IFTD.

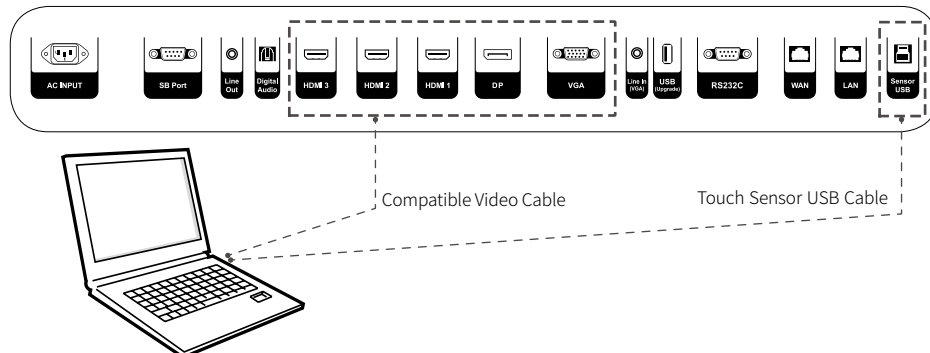
- **Line Out Options:** Here you can set the audio line out to Fixed or Variable.
- **Internal Speaker:** Here you can turn the internal speaker of the IFTD ON or OFF.

'Et Cetera' (Etc) Settings

- **SET ID:** Here you can set the ID of the IFTD. This is useful if you are using more than one IFTD simultaneously.
- **Reset to Default:** Here you can reset the IFTD to its factory settings.

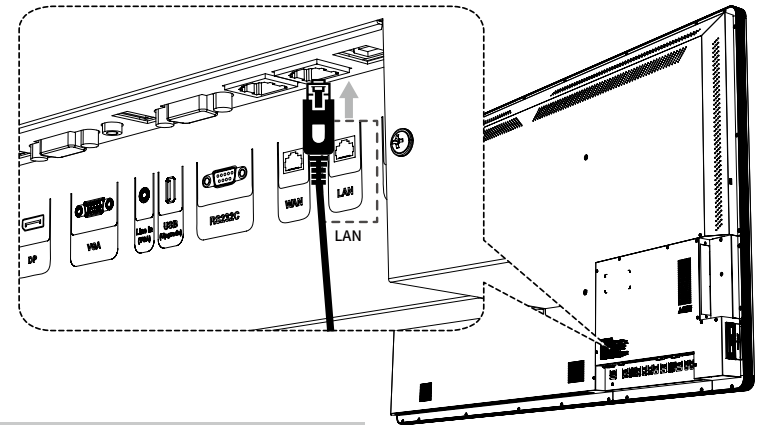
External Devices and Touch Functions

If you want to use an external device in conjunction with the touch functionality of the IFTD it is important that you connect your external device to the IFTD using a compatible video cable AND the Touch Sensor USB cable . If you do not connect the Touch Sensor USB cable you will not be able to use the external device in conjunction with the touch functions of the IFTD.



Operation

Network Settings, Software Updates & Language Options



Network Settings

You can access the IFTD's Android Network Settings by selecting the 'Settings' option in the Menu & Navigation bar.

- **Ethernet Connection:** Connect a LAN cable to the designated port in the IFTD (as shown above). Ethernet connection options can then be altered in Android and Windows according to network specifications.

Software Updates

Select the 'Settings' option in the Menu & Navigation bar. Scroll down and select the 'About Device' option. In the menu bar on the right, select the 'Software Update' option. Now simply choose the method you would like to use to update the software.

Language & Input Options

To change the language and input options of the IFTD in Android, select the 'Language & Input' option in the 'Settings' menu bar. You should now be able to change the language, keyboard and input methods of the IFTD.

Specifications

Panel Information

Diagonal Size	65"	75"	84"	98"
Optimum Resolution	Ultra HD 3840x2160@60Hz	Ultra HD 3840x2160@120Hz	Ultra HD 3840x2160@120Hz	Ultra HD 3840x2160@120Hz
Back Light Unit	E-LED	D-LED	E-LED	D-LED
Response Time	8ms	6ms	5ms	5ms
Viewing Angle (horizontal/vertical)	178° / 178°	178° / 178°	178° / 178°	178° / 178°
Contrast Ratio	1100:1	5000:1	1600:1	1300:1
Brightness	500cd/m2	450cd/m2	350cd/m2	500cd/m2

Touch Information

Diagonal Size	65"	75"	84"	98"
Touch Technology	IR	IR	IR	IR
Simultaneous Touch Points	10	20	20	20
Touch Accuracy (middle/edge)	±2mm	±2mm/±4mm	±2mm/±4mm	±2mm/±4mm
Response Time	≤15ms	≤12.5ms	≤12.5ms	≤12.5ms
Touch Compatibility Supported OS (Multi)	Windows 7 or Higher, Android	Windows 7 or Higher, Android	Windows 7 or Higher, Android	Windows 7 or Higher, Android
Touch Compatibility Supported OS (Single)	Win XP, Vista, Windows 7, 8, 8.1, Linux, Android, Mac, Chrome	Win XP, Vista, Windows 7, 8, 8.1, Linux, Android, Mac, Chrome	Win XP, Vista, Windows 7, 8, 8.1, Linux, Android, Mac, Chrome	Win XP, Vista, Windows 7, 8, 8.1, Linux, Android, Mac, Chrome

Features

Diagonal Size	65"	75"	84"	98"
Dual OS Support	Yes	Yes	Yes	Yes
Windows Support	Yes (Via OPS)	Yes (Via OPS)	Yes (Via OPS)	Yes (Via OPS)
Android Support	Yes (Built-In)	Yes (Built-In)	Yes (Built-In)	Yes (Built-In)
4PIP	Yes	Yes	Yes	Yes
Home Button	Yes	Yes	Yes	Yes
Touch OSD	Yes	Yes	Yes	Yes

Accessory Kit Information

Diagonal Size	65"	75"	84"	98"
AC Power Cable	1	1	1	1
HDMI Cable 2.0	1	1	1	1
Remote Controller	1	1	1	1
Lithium Battery (3V)	1	1	1	1
Touch Sensor USB Cable	1	1	1	1
Stylus Pen	1	1	1	1
Quick Manual	1	1	1	1

Appendix

Connection Information

Diagonal Size	65"	75"	84"	98"
HDMI 2.0	1	1	1	1
HDMI (MHL)	1	1	1	1
HDMI	1	1	1	1
Display Port	1	1	1	1
Touch Sensor USB	1	1	1	1
USB (Upgrade)	1	1	1	1
Gigabit WAN	1	1	1	1
Gigabit LAN	1	1	1	1
VGA Input	1	1	1	1
Component	—	—	—	—
A/V	—	—	—	—
EZ Sound Bar Input	1	1	1	1
EZ Button Input (USB 2.0)	1	1	1	1
EZ Button Input (USB 3.0)	1	1	1	1
EZ OPS Input	1	1	1	1

Environmental Information

Diagonal Size	65"	75"	84"	98"
Operating Temperature	0°C~40°C	0°C~40°C	0°C~40°C	0°C~40°C
Storage Temperature	-10°C~60°C	-10°C~60°C	-10°C~60°C	-10°C~60°C
Operating Humidity	~80%	~80%	~80%	~80%
Storage Humidity	~90%	~90%	~90%	~90%

Appendix

Mechanical Information

Diagonal Size	65"	75"	84"	98"
Outline Dimensions (mm)	1508.7mm x 897.7mm x 92mm	1732.0mm x 1024.0mm x 100mm	1943.7mm x 1141.7 x 92mm	2240mm x 1308mm x 106mm
Packaged Outline Dimensions	1695mm x 1050mm x 310mm	1945mm x 1200mm x 310mm	2200mm x 1360mm x 365mm	2520mm x 1530mm x 365mm
Product Weight	61.4Kg	85.5Kg	103.1Kg	185.2Kg
Gross Weight	74.9Kg	100.5Kg	125.8Kg	212.5Kg
Installation Type	Stand, Wall Mount	Stand, Wall Mount	Stand, Wall Mount	Stand, Wall Mount
Mount Type	VESA 400(H) x 400(V)	VESA 600(H) x 400(V)	VESA 600(H) x 400(V)	VESA 800(H) x 400(V)
Power Input Range	100V~240V~	100V~240V~	100V~240V~	100V~240V~
Viewing Orientation	Landscape Only	Landscape Only	Landscape Only	Landscape Only
Regulatory Approval	CE, RoHS Green Compliant	CE, RoHS Green Compliant	CE, RoHS Green Compliant	CE, RoHS Green Compliant

Android Information

Diagonal Size	65"	75"	84"	98"
Model	Cortex A17	Cortex A17	Cortex A17	Cortex A17
Windows Chipset	RK3288	RK3288	RK3288	RK3288
OS Version	KitKat 4.4.2	KitKat 4.4.2	KitKat 4.4.2	KitKat 4.4.2
Memory	2 GB	2 GB	2GB	2 GB
Storage	16GB	16GB	16GB	16GB
Core	Quad Core	Quad Core	Quad Core	Quad Core



Date of Purchase